

## INOSP Series 15" 19"



### I/O View



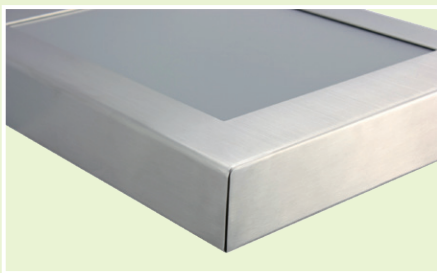
INOSP-152-RE/ INOSP-192-RE  
(Full Function)



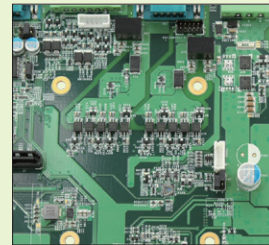
INOSP-152-RE/ INOSP-192-RE/ INOSP-192-PC  
(Standard)

### Features

- Fanless design
- Resistive/ Projected capacitive (19" model) touch
- Durable stainless steel housing
- Low power consumption processor
- High-brightness for outdoor  
(INOSP-192-PC only)



- Wide-range 10V~30V DC power input
- USB 3.0 (optional)



- M12 I/O port



Vertical Applications Panel PC  
INOSP Stainless Steel Panel PC  
ASTUT: All-in-one Panel PC with Riser Card Expansion  
BYTEM: Compact Panel PC  
IPCC: Heavy-duty Industrial Panel PC  
OPF FRAME PC  
BYARM/MRS: ARM-Based Panel PC

# INOSP-152-RE / INOSP-192-RE / INOSP-192-PC

## Specifications

Model No.		INOSP-152-RE	INOSP-192-RE	INOSP-192-PC
Display & Touch Screen	Display Size	15" TFT-LCD	19" TFT-LCD	19" TFT-LCD
	Max. Resolution	1024 x 768	1280 x 1024	1280 x 1024
	Luminance (cd/m <sup>2</sup> )	500	350	1000
	Contrast	800 : 1	1000 : 1	1000 : 1
	Max. Color	16.2M	16.7M	16.7M
	View Angle (H°/V°)	160/160	170/160	170/160
	Backlight Lifetime(hrs)	50,000	50,000	50,000
	Touch Type	Resistive	Resistive	Projected capacitive
	Touch Interface	USB	USB	USB
	Light Transmission (%)	80	80	80
	Point of touch	1	1	1
I/O Interface	USB 3.0	option(M12)	option(M12)	option(M12)
	USB 2.0	1(M12)	1(M12)	1(M12)
	RS-232/422/485 Selectable in BIOS	1(M12)	1(M12)	1(M12)
	RS-232	1(M12)	1(M12)	1(M12)
	LAN	1x GbE(M12)	1x GbE(M12)	1x GbE(M12)
	Additional Graphics	None	None	None
	Audio	None	None	None
	Digital I/O	None	None	None
	Power Connector	M12 connector	M12 connector	M12 connector
	Power Button	None	None	None
Mechanical	Dimensions (mm)	425 x 330 x 62.5	470 x 390 x 62.5	470 x 390 x 62.5
	Net Weight (kgs)	13.5	17	19
System	Processor	Intel® Atom™ Processor E3845 1.91GHz	Intel® Atom™ Processor E3845 1.91GHz	Intel® Atom™ Processor E3845 1.91GHz
	Memory	2x DDR3L SO-DIMM, up to 8GB, default 4GB	2x DDR3L SO-DIMM, up to 8GB, default 4GB	2x DDR3L SO-DIMM, up to 8GB, default 4GB
	Thermal Design	Fanless	Fanless	Fanless
	Membrane Control	None	None	None
	Built-in Speaker/MIC	None	None	None
Expansion	Internal Expansion Bus	1x Mini PCI-E(x1) [full/half-size] 1x Mini PCI-E(x1) [half-size]	1x Mini PCI-E(x1) [full/half-size] 1x Mini PCI-E(x1) [half-size]	1x Mini PCI-E(x1) [full/half-size] 1x Mini PCI-E(x1) [half-size]
	Expansion Slot	None	None	None
	Wireless	None	None	None
Storage Space	HDD	1x 2.5" SATA	1x 2.5" SATA	1x 2.5" SATA
	Removable	None	None	None
Power	Power Input Range	10V~30V DC	10V~30V DC	10V~30V DC
Construction	Chassis Material	304 stainless steel / 316 stainless steel as option		
	Color (Front/Back)	Silver / Silver		
	IP Rating	IP65 rated front bezel		
	Mounting	VESA 75x75mm and 100x100mm		
Environmental	Operating Temperature	0°C ~ 50°C		
	Storage Temperature	-20°C ~ 60°C		
	Storage Humidity	10%~90% (non-condensing)		
	Certification	CE/FCC class B and LVD		
	Supported Operating Systems	Windows 10/ Windows 8 32-bit/64-bit, Windows 7 Pro for Embedded 64-bit, WES7 64-bit		

Vertical Applications  
Panel PC

INOSP: Stainless Steel  
Panel PC

ASTUT: All-in-one Panel PC  
with Fiber Card Expansion

BYTEM: Compact Panel PC

IPPC: Heavy-duty  
Industrial Panel PC

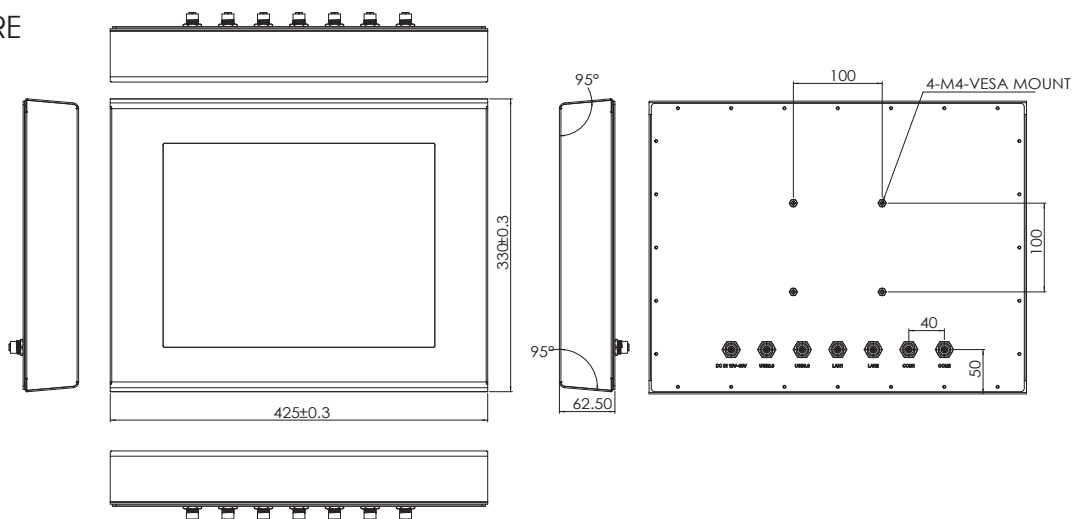
OPF FRAME PC

BYARM/MRS:  
ARM-Based Panel PC

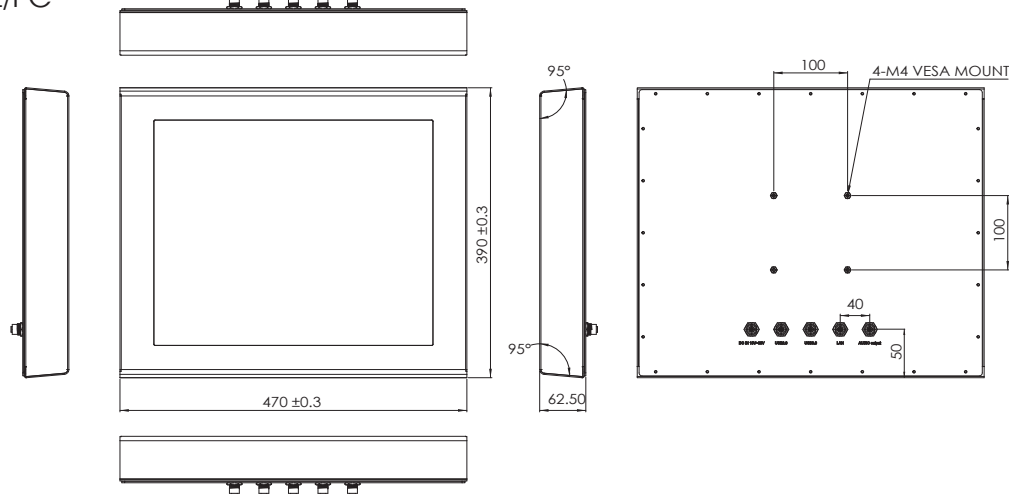
# INOSP-152-RE / INOSP-192-RE / INOSP-192-PC

## Dimensions

INOSP-152-RE



INOSP-192-RE/PC



## Ordering Information

INOSP-152-RE	15" (1024 x 768) Stainless Steel Panel PC with IB897, Intel® Atom™ Processor E3845 1.91GHz, 4GB DDR3L SO-DIMM, 64G SSD, resistive touch
INOSP-192-RE	19" (1080 x 1024) Stainless Steel Panel PC with IB897, Intel® Atom™ Processor E3845 1.91GHz, 4GB DDR3L SO-DIMM, 64G SSD, resistive touch
INOSP-192-PC	19" (1080 x 1024) High Brightness Stainless Steel Panel PC with IB897, Intel® Atom™ Processor E3845 1.91GHz, 4GB DDR3L SO-DIMM, 64G SSD, projected capacitive touch with 10mm thickness

Vertical Applications Panel PC  
 INOSP Stainless Steel Panel PC  
 ASTUT: All-in-one Panel PC with Riser Card Expansion  
 BYEM: Compact Panel PC  
 IPCC: Heavy-duty Industrial Panel PC  
 OFP FRAME PC  
 BYARM/MRS: ARM-Based Panel PC